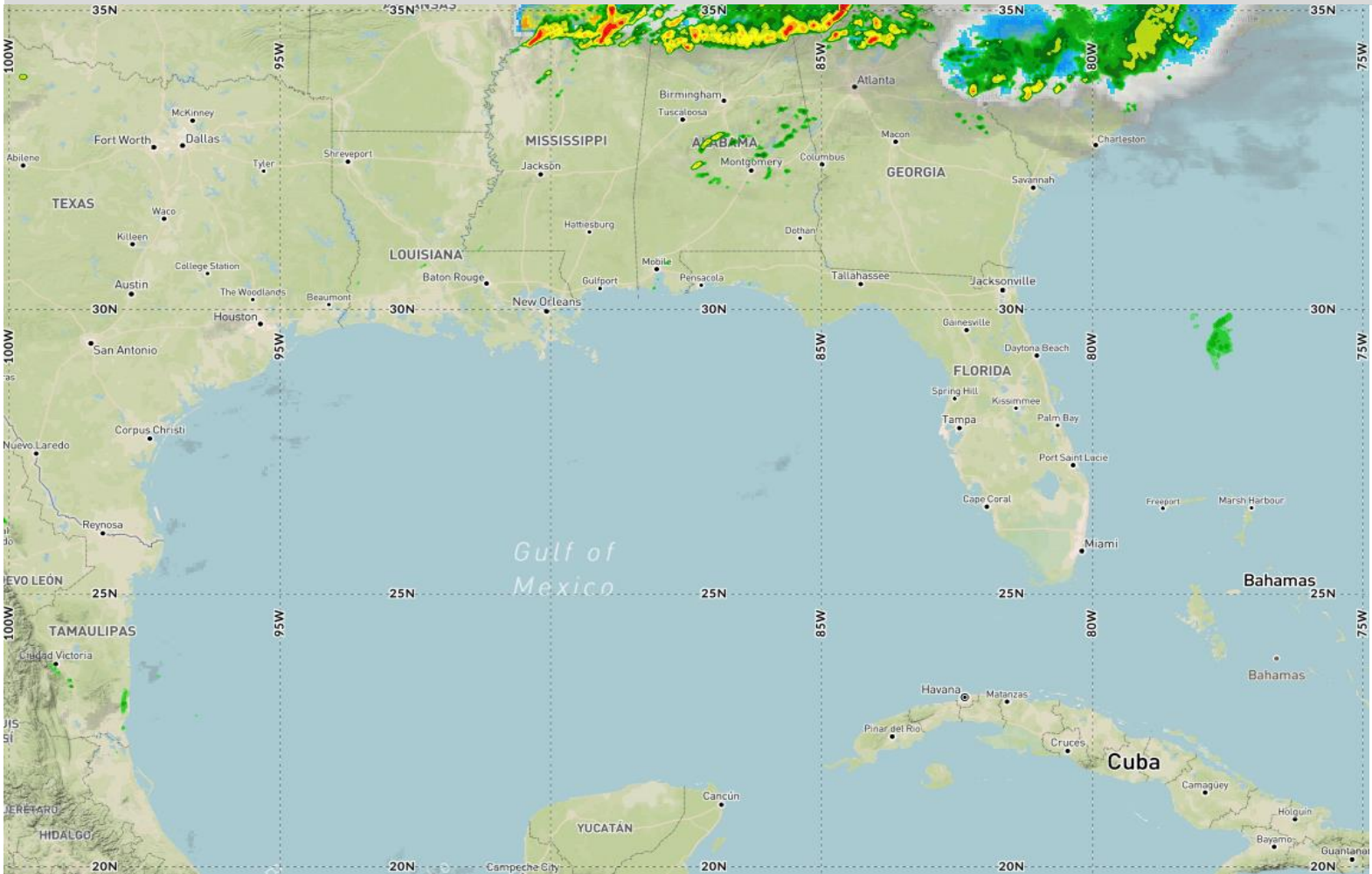


Current Radar and Satellite Data



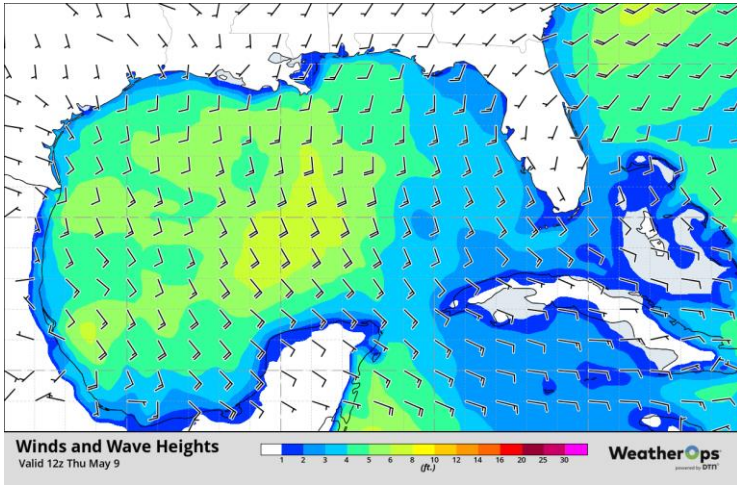
Today and Tomorrow's Weather

A frontal boundary will dive east-southeastward today and likely move over the northern basin tonight through tomorrow morning. Winds will remain southerly to southeasterly today at moderate to fresh speeds with slight to moderate seas. The front will be relatively benign, with winds shifting out of the north but only at gentle to moderate speeds as the main energy of the boundary looks to focus over offshore Mississippi/Alabama/Florida where a few thunderstorms will be possible potentially producing locally enhanced wind gusts. Winds become northeasterly tomorrow evening at moderate to fresh speeds with slight seas.

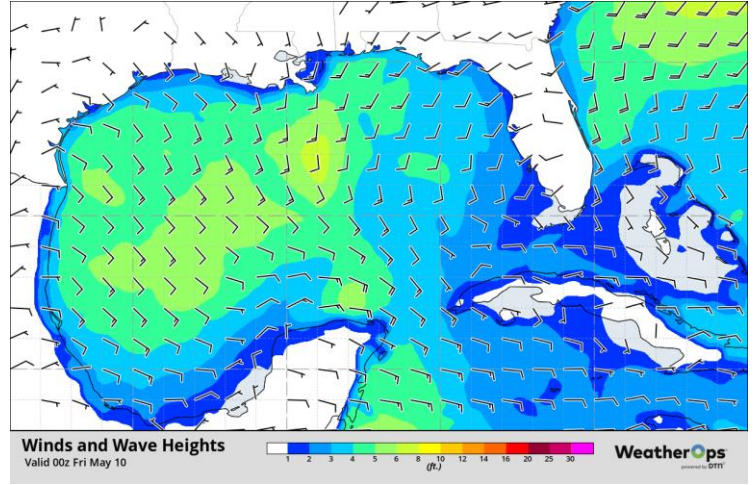
Day Three through Seven Weather Hazards

Easterly to east-northeasterly winds will overspread much of the basin this weekend, likely sustained at fresh speeds with gusts of 25-30 knots. Model guidance shows a shortwave feature developing over eastern Texas on Sunday, potentially bringing a few showers and thundershowers to parts of the northwestern region through the night with winds becoming southeasterly. Thundershower activity may spread eastward over offshore Louisiana by Monday morning before a more substantial system develops later that day. Thunderstorms may become more scattered over the northern basin Monday afternoon through Tuesday morning with another shortwave, spreading eastward towards the eastern basin through Day 7. A few strong thunderstorms will be possible with this system leading to locally hazardous conditions.

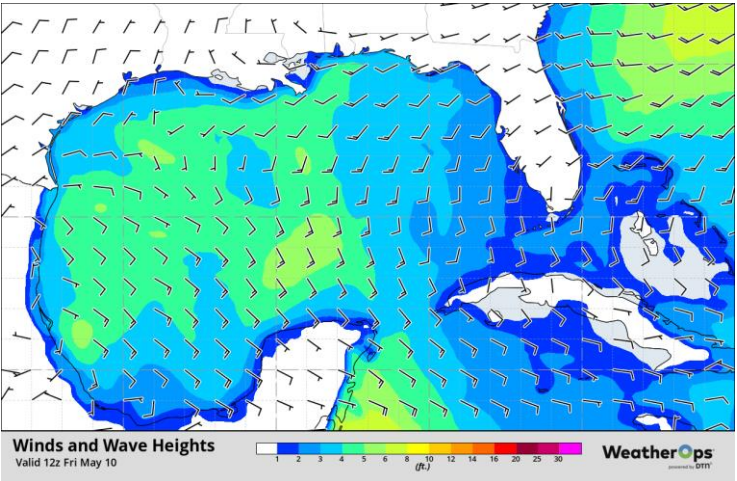
This Morning's Winds and Seas



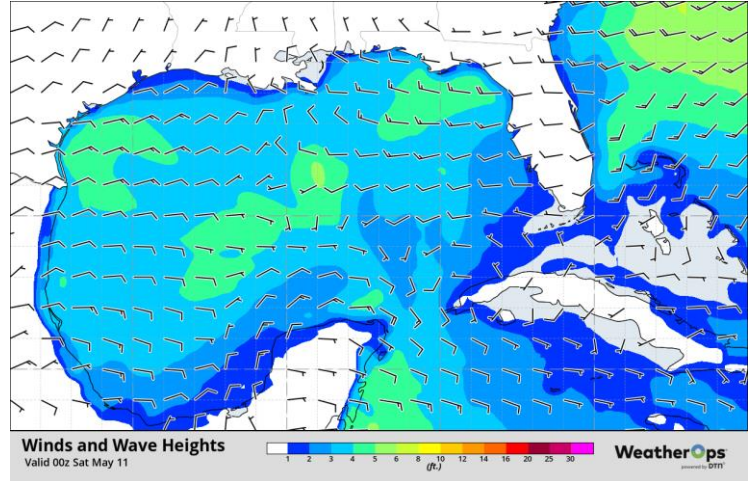
This Evening's Winds and Seas



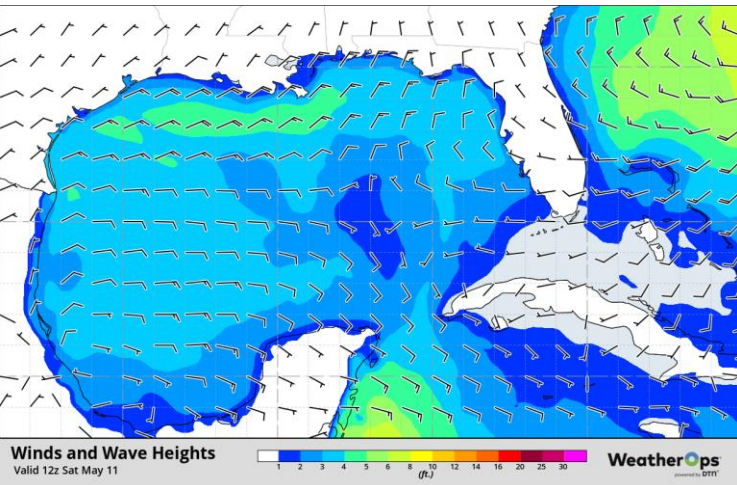
Tomorrow Morning's Winds and Seas



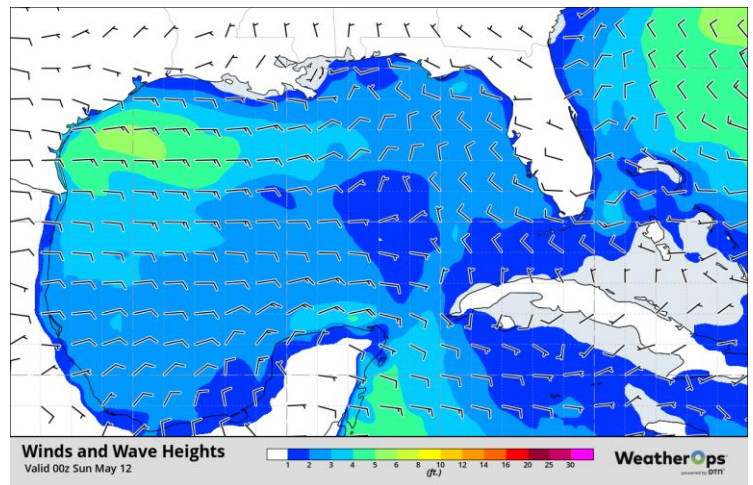
Tomorrow Evening's Winds and Seas



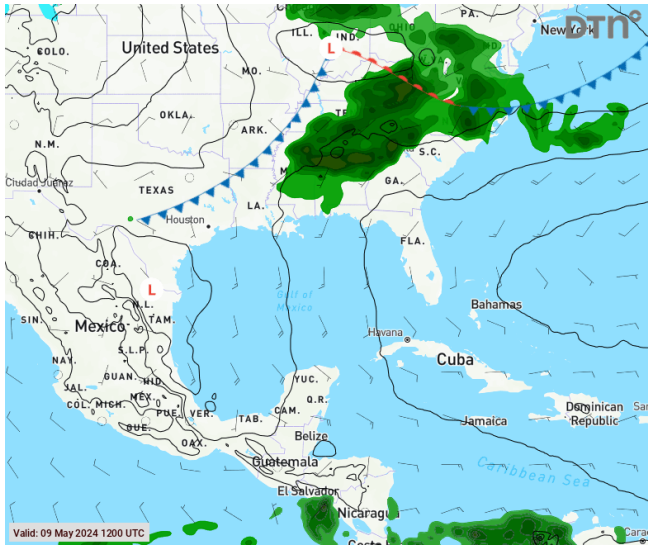
Day 3 Morning Winds and Seas



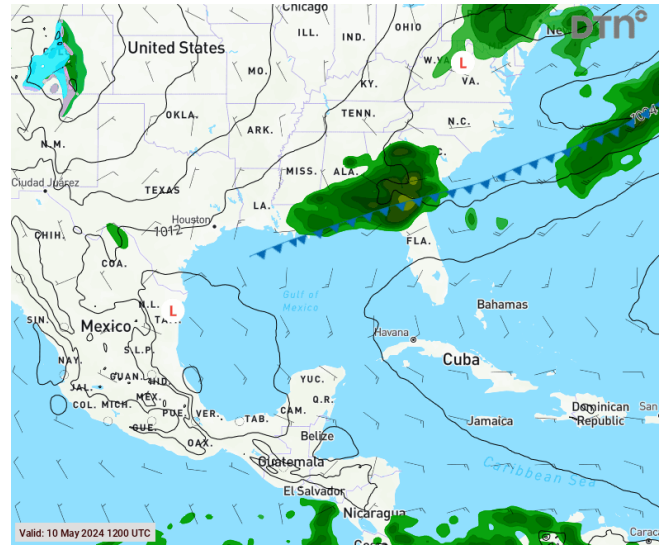
Day 3 Evening Wind and Seas



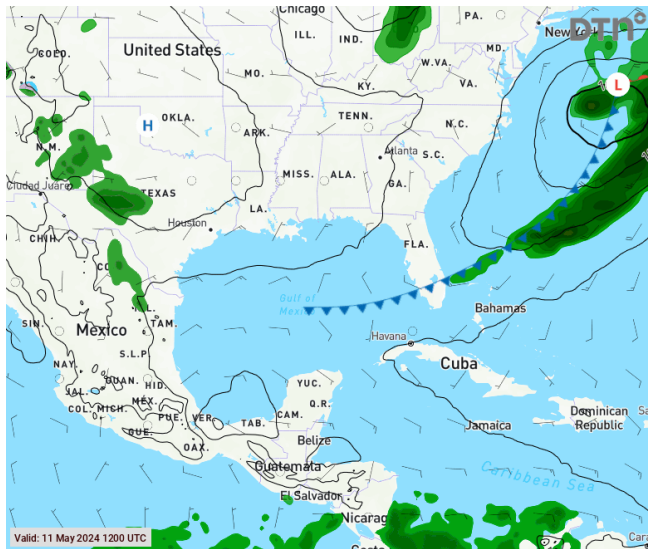
Day 1 Surface Chart



Day 2 Surface Chart



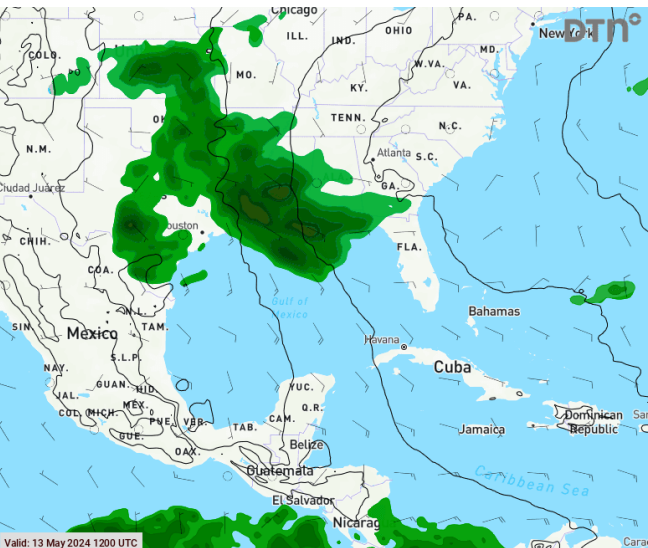
Day 3 Surface Chart



Day 4 Surface Chart



Day 5 Surface Chart



Day 6 Surface Chart

