



## Marine Safety Information Bulletin

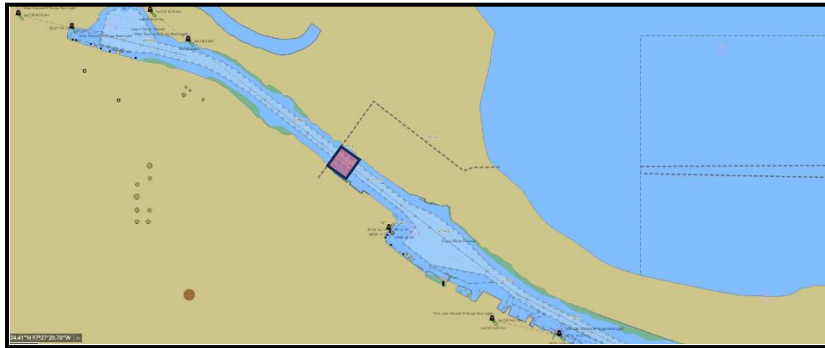
30-24

Worksite – CCSC, Inner Harbor

Issue Date: May 6, 2024

The Captain of the Port is establishing a worksite in the Corpus Christi Ship Channel, Inner Harbor, near Buckeye TX HUB 1 Dock. Callan Marine has informed the U.S. Coast Guard that they will be installing 2 pieces of a submerged dredge pipeline in the Inner Harbor, on May 8, 2024 from 10 a.m. to 2 p.m. This operation may impact navigation and may require vessels to take appropriate action for the protection of personnel, vessels, and the marine environment. The coordinates of the work area are: 27°50'5.6574"N, 97°30'6.7824"W; 27°50'2.259"N, 97°30'9.7056"W; 27°50'1.3266"N, 97°30'0.1506"W; 27°49'56.6184"N, 97°30'4.4316"W. No vessels should transit through the work area without coordinating through the U.S. Coast Guard. The operation will obstruct all ship and barge traffic during this 4-hour window. The M/V SARATOGA, M/V CORAL SEA, M/V YELLOW EDGE and DREDGE GENERAL MARSHALL will be monitoring VHF channel 12 and 80.

Concerned parties with urgent concerns can contact the U.S. Coast Guard Sector Corpus Christi Command Center at 1-800-874-2143; or for non-urgent questions and concerns, email [CCWaterways@uscg.mil](mailto:CCWaterways@uscg.mil).



A handwritten signature in blue ink that reads "A. Garofalo".

A. GAROFALO

Lieutenant Commander, U.S. Coast Guard  
Sector Corpus Christi  
By Direction of the Captain of the Port