



U.S. Coast Guard Sector Maryland-NCR

2401 HAWKINS POINT ROAD, BLDG 70

BALTIMORE, MD 21226-1791

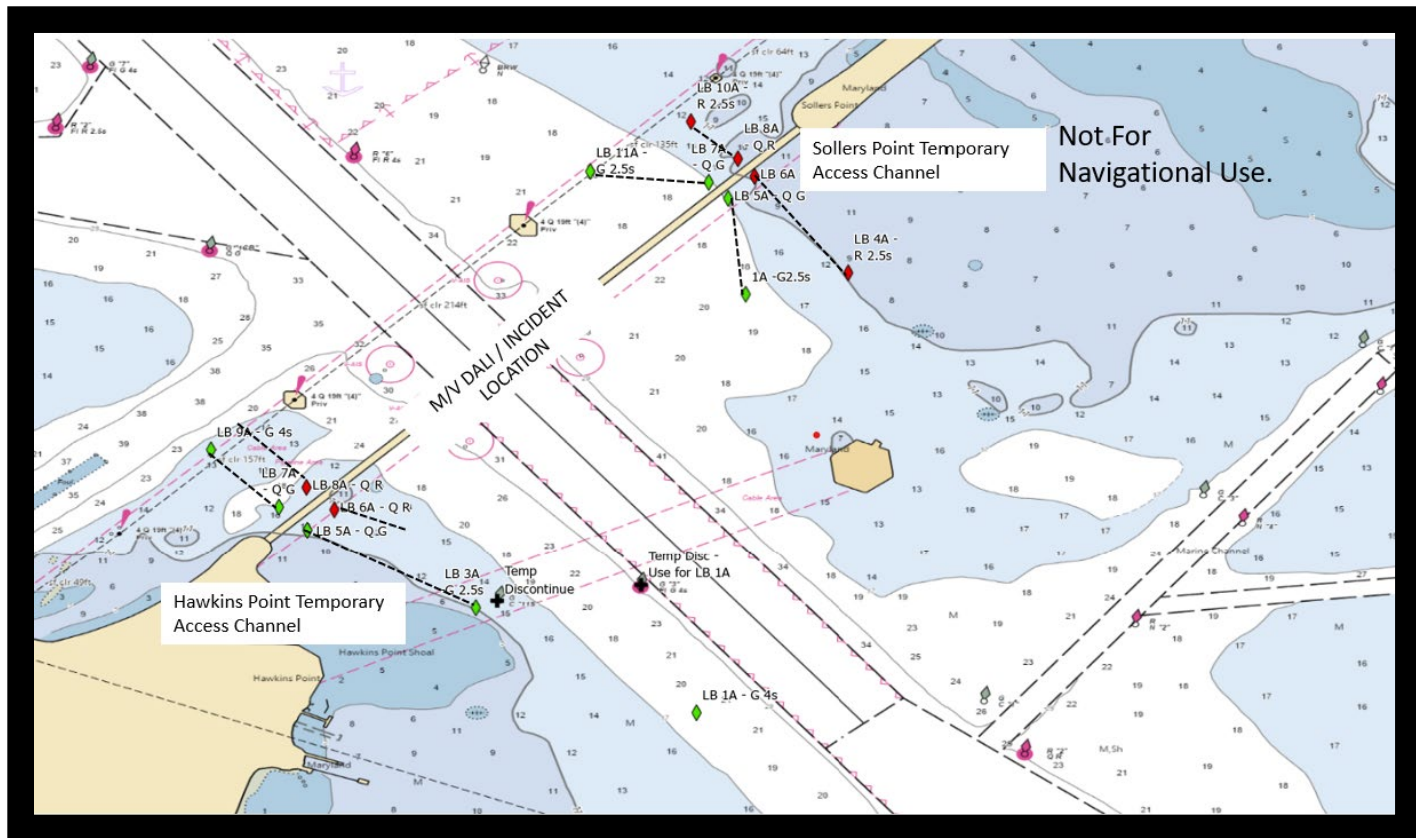
MTSRecoveryMDNCR@uscg.mil

MARINE SAFETY INFORMATION BULLETIN 039-24

April 4, 2024

Port of Baltimore Safety Zone – Key Bridge Response 2024
Temporary Alternate Channels Update

This Marine Safety Information Bulletin replaces and cancels MSIB 037-24 and MSIB 038-24.



The Captain of the Port (COTP) has established two temporary alternate channels for commercially essential vessels: the Sollers Point Temporary Alternate Channel is located on the northeast side of the main ship channel and the Hawkins Point Temporary Alternate Channel is located on the southwest side of the main ship channel. Both are in the vicinity of the Francis Scott Key Bridge. This action was part of a phased approach to opening the main federal channel. These temporary channels are marked with government lighted aids to navigation and will be limited to transit at the discretion of the COTP and during daylight hours only.

Due to updated surveys and waterway user feedback, these channels have had aids repositioned to facilitate transits through best water. The updated approximate locations of aids to navigation can be found in Broadcast Notice to Mariners, and in the near future found in the USCG Light List/Local Notice to Mariners.

The Sollers Point Temporary Channel has a controlling depth of 11 feet, a 264-foot horizontal clearance, and vertical clearance of 95 feet.

The Hawkins Point Temporary Channel has a controlling depth of 14 feet, a 280-foot horizontal clearance, and vertical clearance of 124 feet.

The current 2,000-yard safety zone around the Francis Scott Key Bridge (see [MSIB 036-24](#)) remains in effect and is intended to protect personnel, vessels, and the marine environment. No vessel or person will be permitted to enter the safety zone without first obtaining permission from the COTP or a designated representative. The COTP is currently issuing a Broadcast Notice to Mariners (BNM) via VHF-FM marine channel 16. Mariners are requested to monitor the VHF channel 16 for the latest information.

You may not enter the safety zone described above unless authorized by the COTP or the COTP's designated representative. To obtain permission to enter the safety zone and transit through the temporary alternate channel, you must, **as early as possible but no less than 4 hours prior to getting underway**, contact the Marine Transportation System Recovery Branch at (505) 203-8141. These requests must be received between the hours of 8 a.m. to 6 p.m. For movements scheduled to occur before 10 a.m. must be received prior to 6 p.m. the previous day. **All movements are subject to response and recovery efforts.**

As you approach the safety zone and prior to entry, contact the on-scene Patrol Commander on VHF channel 81A (157.075 MHz). Those in the safety zone must comply with all lawful orders or directions given to them by the COTP or the COTP's designated representative. The U.S. Coast Guard may be assisted in the patrol and enforcement of the safety zone by Federal, State, and local agencies.

Baxter B. Smoak
BAXTER B. SMOAK
COMMANDER, U.S. COAST GUARD
USCG SECTOR MARYLAND-NCR