



## Marine Safety Information Bulletin

22-24

Lydia Ann Channel

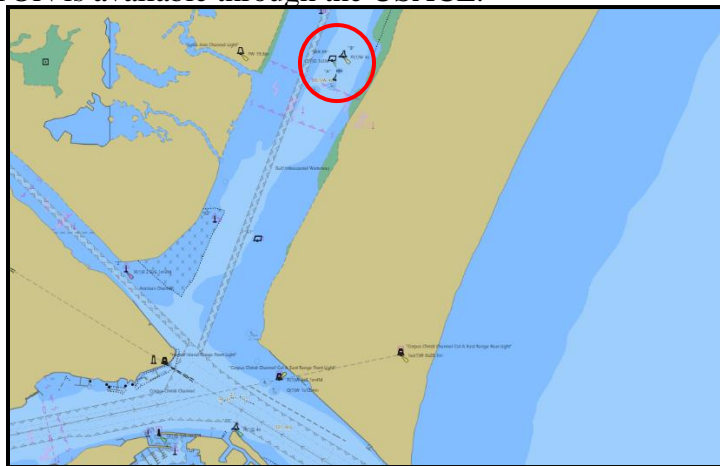
Issue Date: April 5, 2024

**All mariners are urged to exercise extreme caution when navigating near the USS JOHN WORTHINGTON wreck as reported water depths above the wreck are less than previously documented. Portions of the wreck are 4.8 feet below mean lower low water.**

Towing vessels subject to 46 CFR Subchapter M shall conduct navigation assessments required by 46 CFR §140.635 and account for the navigation hazard of transiting near the USS JOHN WORTHINGTON wreck. Vessels utilizing a Towing Safety Management System (TSMS) and routinely operating in the Lydia Ann Channel should consider identifying the navigation hazard within their TSMS.

The wreck is parallel to the Lydia Ann Channel and located south of the Lydia Ann Channel Fleet. The extent of the wreckage is contained between the follow estimated coordinates: 27°51'49.67"N, 097°02'58.47"W; 27°51'49.06"W, 097°02'59.13"W; 27°51'46.59"N, 097°03'00.09"W; 27°51'45.38"N, 097°03'00.11"W; 27°51'46.3"N, 097°02'59.42"W; 27°51'48.90"N, 097°02'58.43"W; and 27°51'49.67"N, 097°02'58.47"W. The USS JOHN WORTHINGTON is marked with Aransas Bay Alternate Route lighted buoy "WR59", lighted danger buoy "A", and lighted danger buoy "B". Aids to navigation discrepancy reports can be made through the U.S. Coast Guard Navigation Center at [ATON Discrepancy Report Form | Navigation Center \(uscg.gov\)](#) or to the U.S. Coast Guard Sector Corpus Christi Command Center at 1-800-874-2143.

The U.S. Army Corps of Engineers (USACE) has provided updated survey data of the USS JOHN WORTHINGTON, a World War I era tanker sunk in the vicinity of the Lydia Ann Channel. [Survey data](#) of the USS JOHN WORTHINGTON is available through the USACE.



*A. Garofalo*  
A. GAROFALO

Lieutenant Commander, U.S. Coast Guard  
By Direction of the Captain of the Port